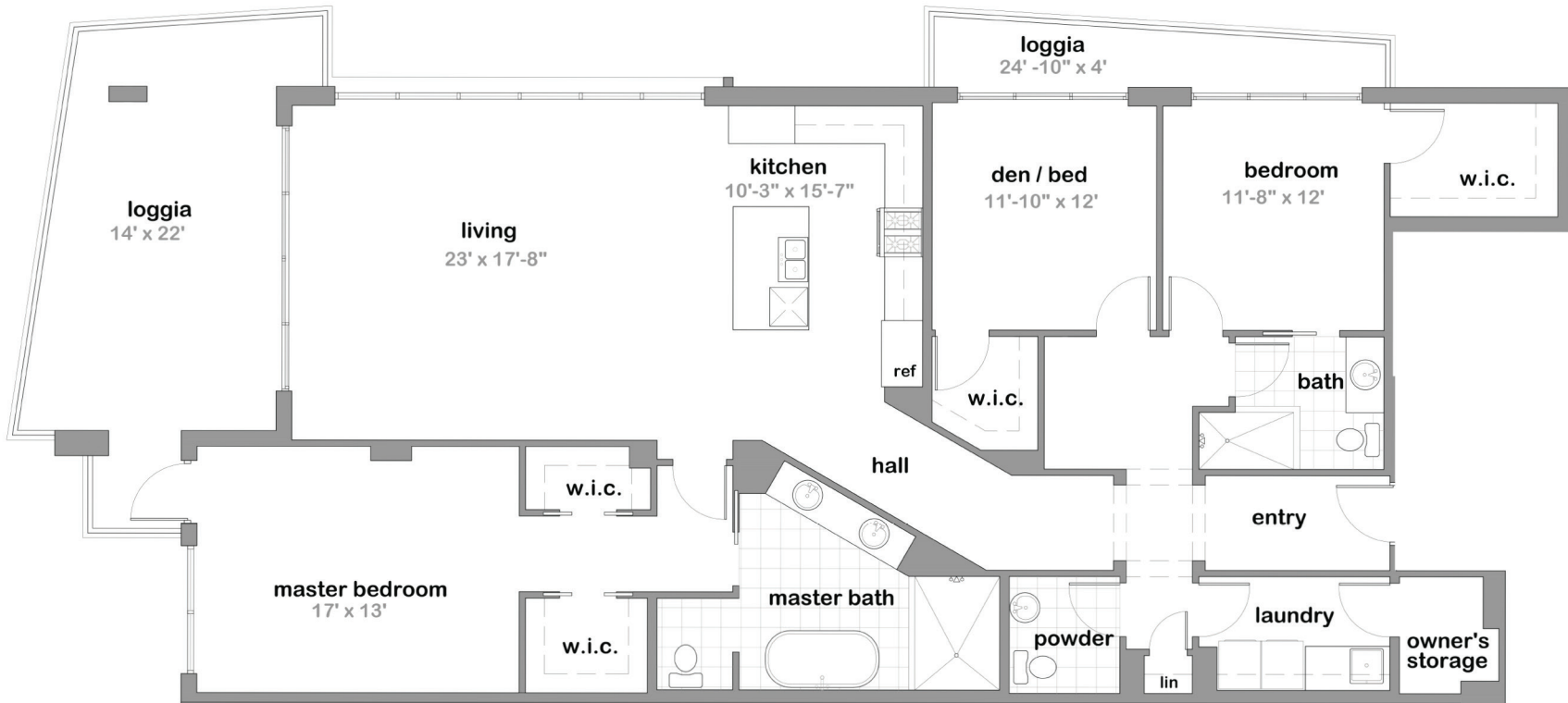


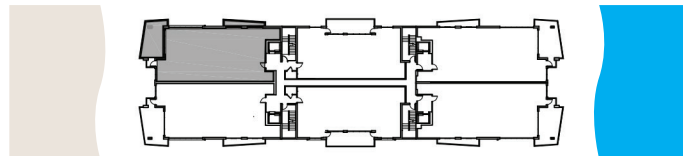
1200 THE OCEAN

FLOORPLANS & AMENITIES

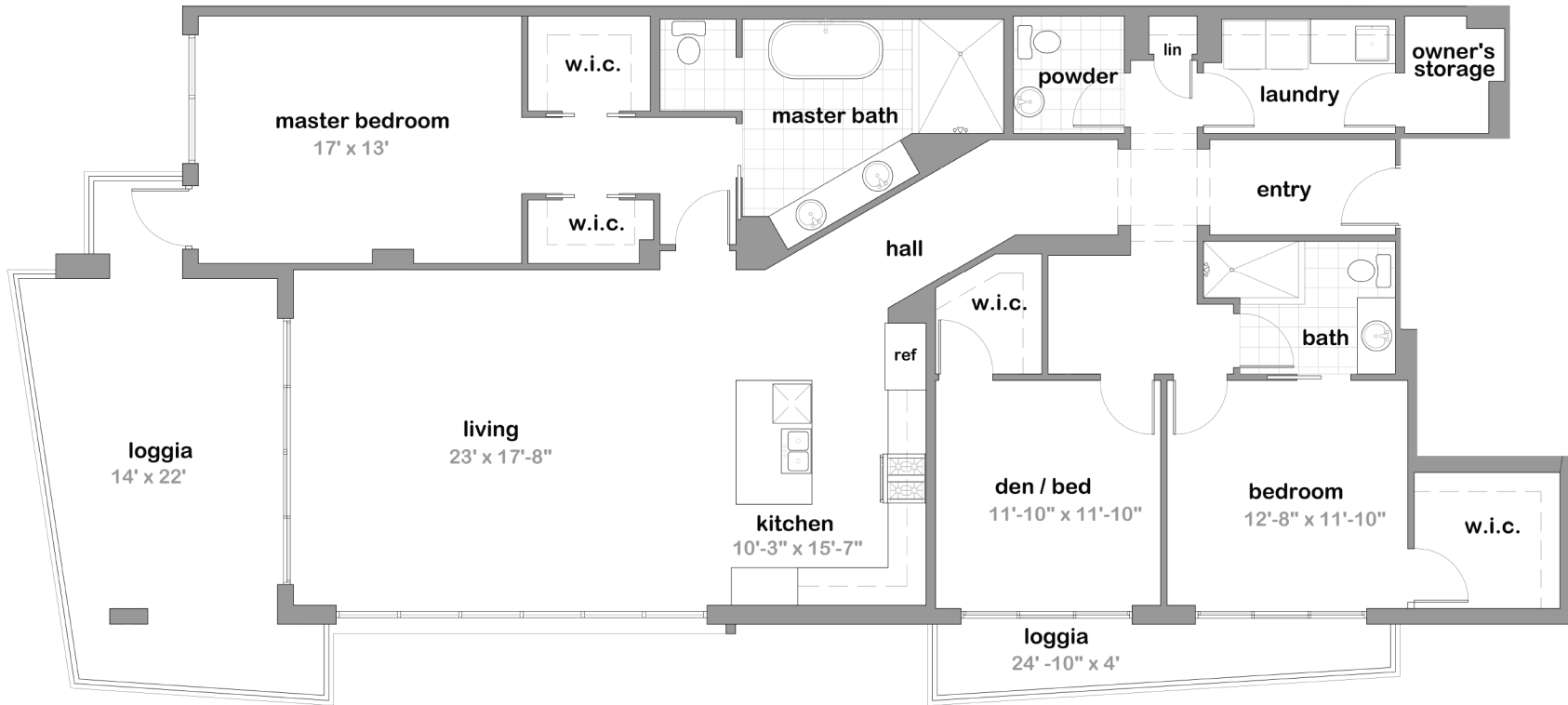
SANDPEARL NORTH



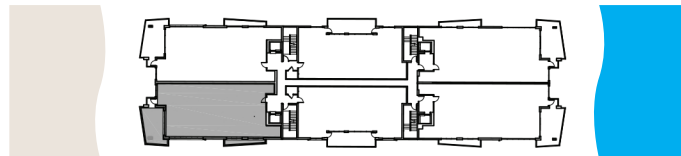
LIVING AREA **2105** SQ.FT. | LOGGIA **404** SQ.FT. | TOTAL **2509** SQ.FT.



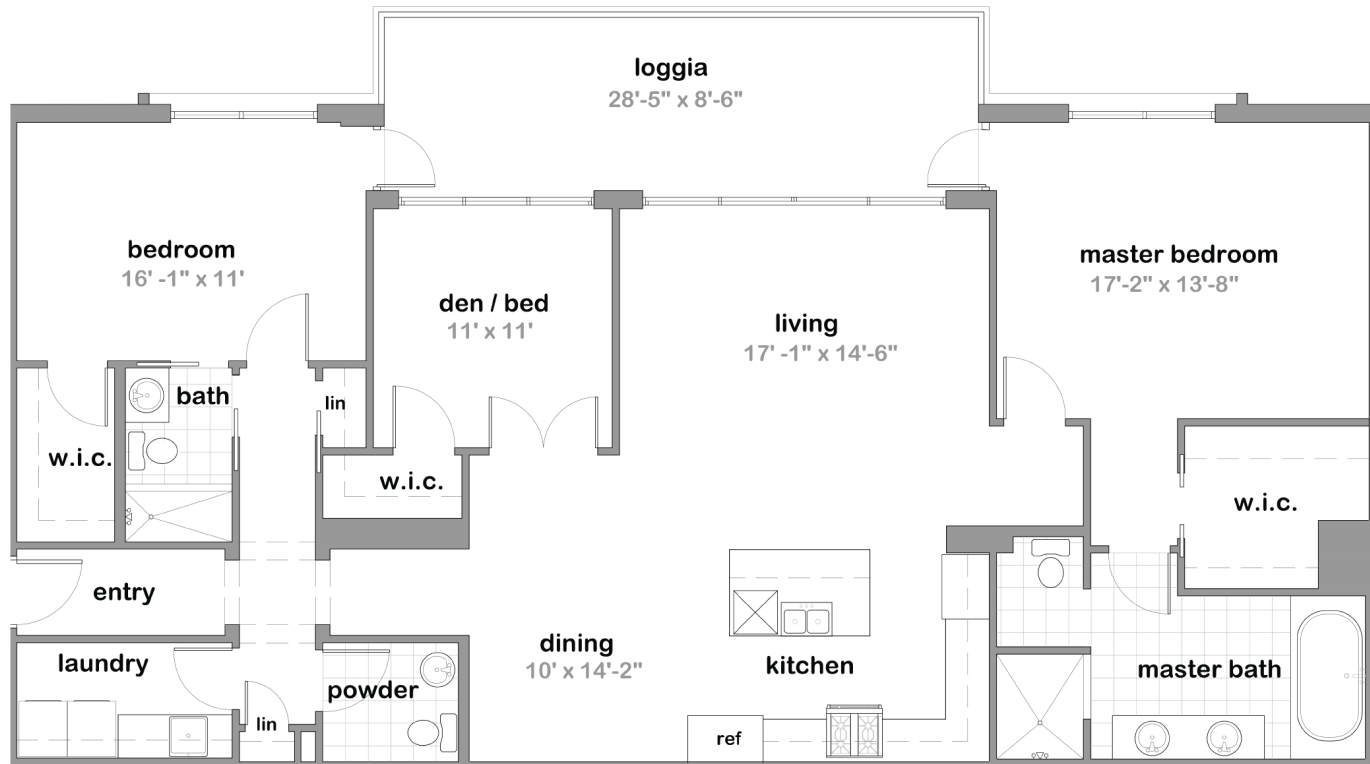
SANDPEARL SOUTH



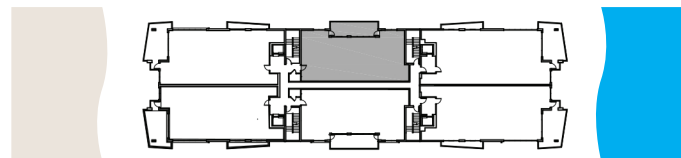
LIVING AREA **2105** SQ.FT. | LOGGIA **404** SQ.FT. | TOTAL **2509** SQ.FT.



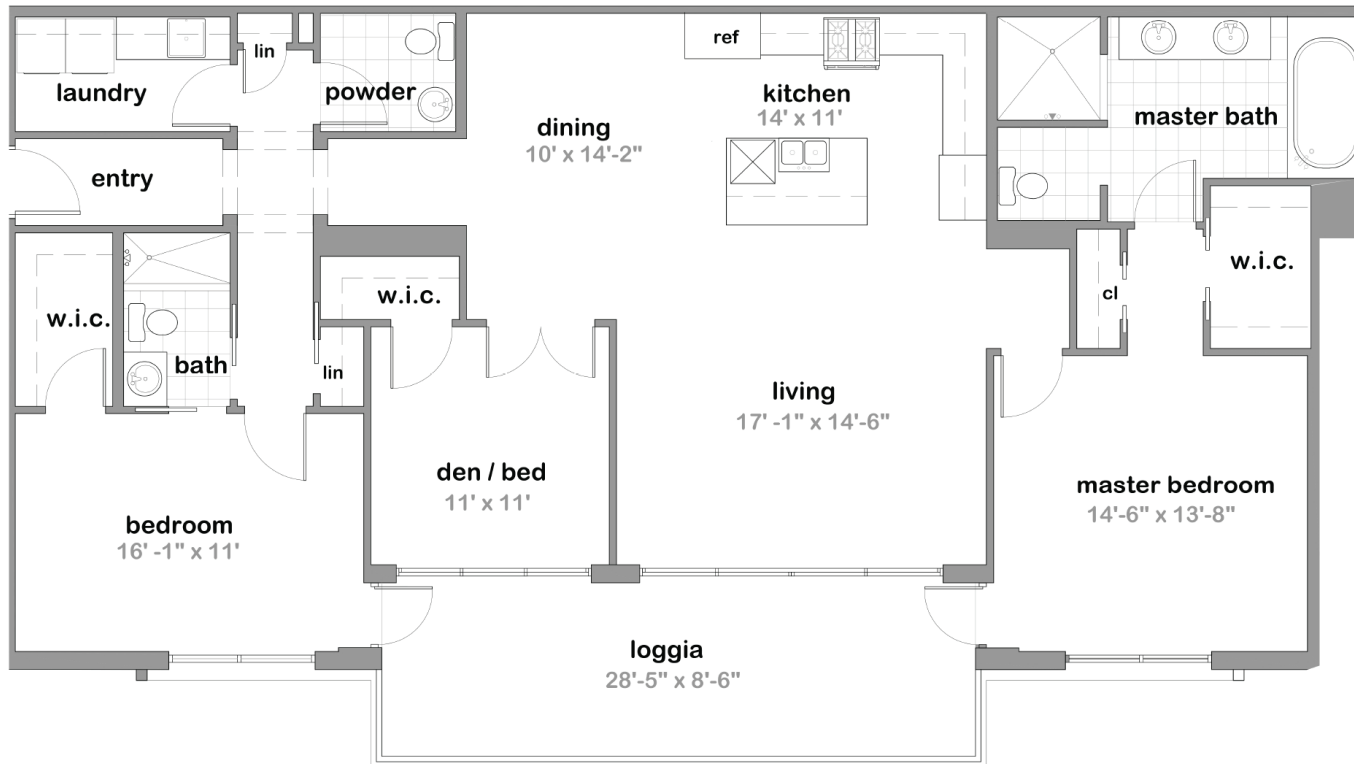
AQUAMARINE NORTH



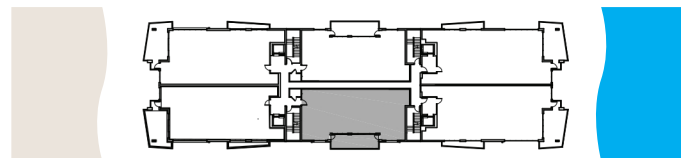
LIVING AREA **1881** SQ.FT. | LOGGIA **237** SQ.FT. | TOTAL **2118** SQ.FT.



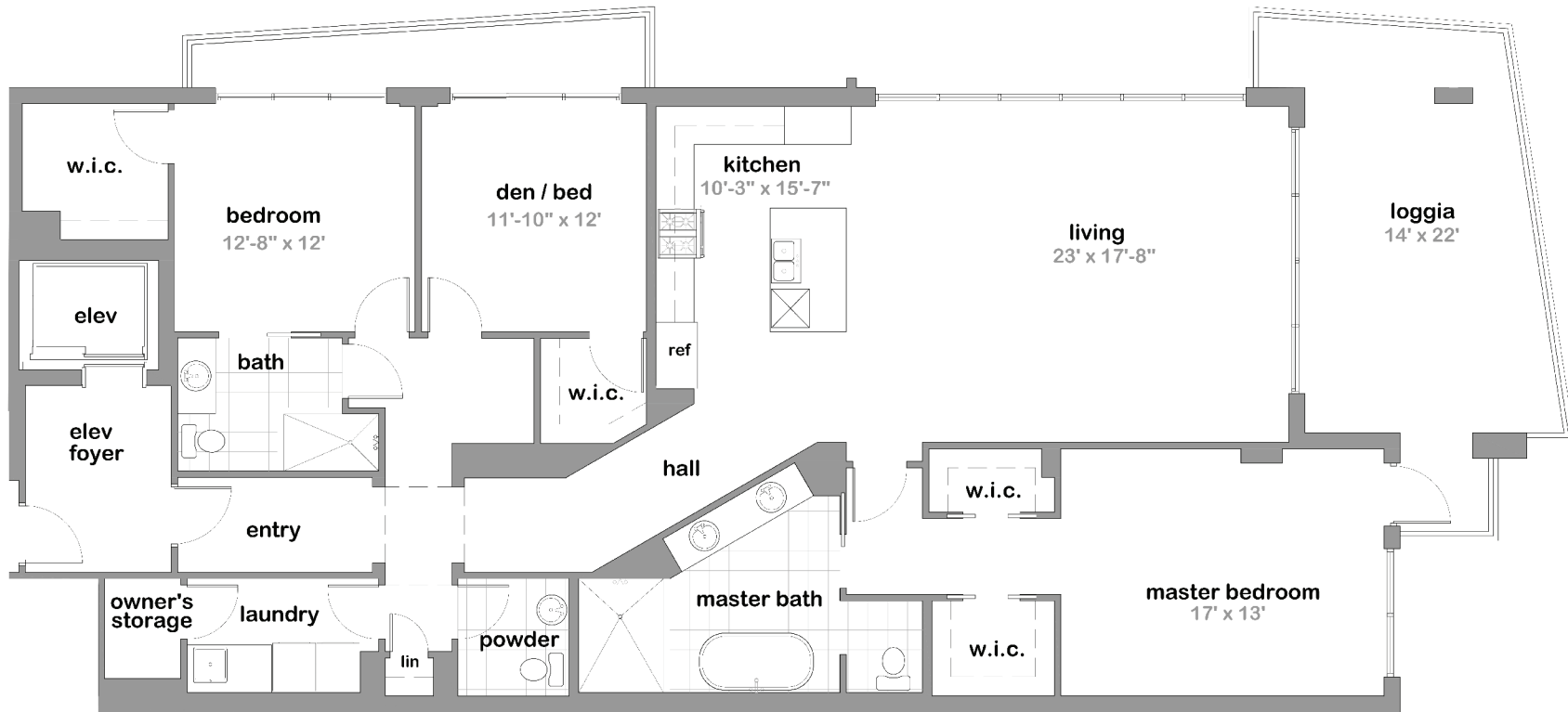
AQUAMARINE SOUTH



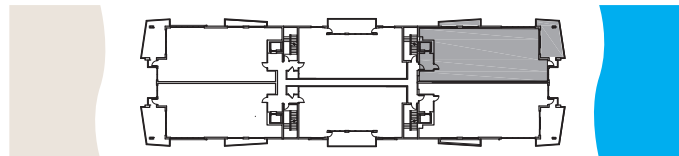
LIVING AREA **1825** SQ.FT. | LOGGIA **237** SQ.FT. | TOTAL **2062** SQ.FT.



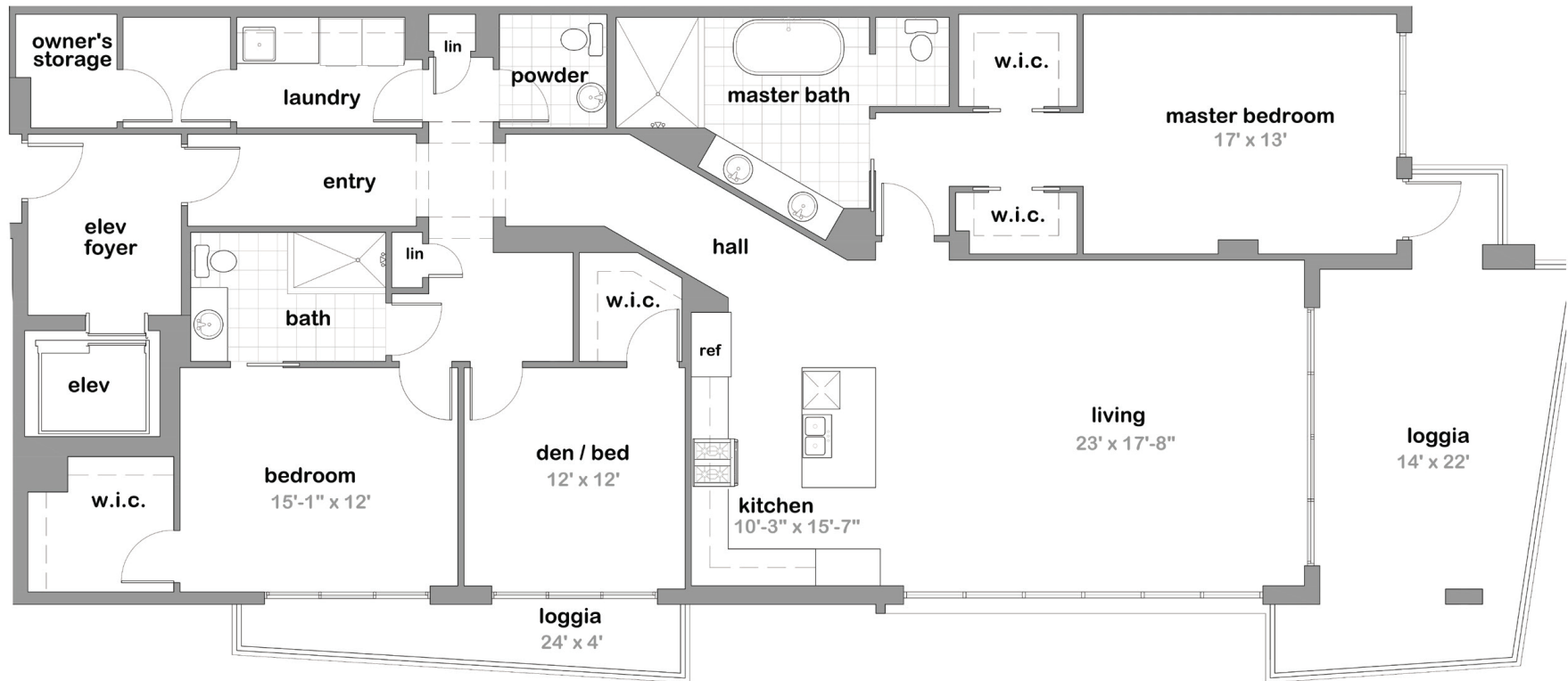
EMERALDSEA NORTH



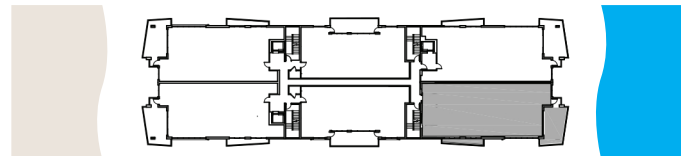
LIVING AREA **2254** SQ.FT. | LOGGIA **404** SQ.FT. | TOTAL **2658** SQ.FT.



EMERALDSEA SOUTH



LIVING AREA **2374** SQ.FT. | LOGGIA **404** SQ.FT. | TOTAL **2778** SQ.FT.





BUILDING AMENITIES

- Private beach
- Ocean front pool
- Resident parking tucked conveniently underneath the building
- Decorator appointed lobby with computerized access control
- Storage lockers

RESIDENTIAL FEATURES

- Private and semi-private elevator access
- Expansive 9' 6" ceiling height in main living area and bedrooms
- Oversized balconies accessible from living room, master suite and bedrooms/den
- High impact glass for hurricane protection, energy efficient windows and doors throughout
- Solid core, 8' interior doors with stainless steel handles
- State-of-the-art telecommunications wiring for TV, phone, iPad and computer
- Laundry room with cabinet storage, sink, and full size Maytag washer and dryer
- Energy efficient central air conditioning by Trane
- Hansgrohe faucets with clear glass vessel in the guest bathroom
- Recessed lighting in hallways, bathrooms, kitchens and great rooms (per blue print)
- Concealed ceiling mount fire protection system
- Interactive smart home control system

GOURMET KITCHEN

- Sleek, contemporary, Italian cabinetry with soft close doors and drawers
- Custom quartz countertops
- 36" SUB-ZERO Refrigerator
- Wolf 30" Electric radiant cook top with touch controls
- Best 30" Stainless steel hood
- Wolf 24" Electric Wall Oven
- Wolf 24" Microwave
- Blanco undermount Super stainless steel sink with Mirabelle faucet
- Bosch Dishwasher

MASTER SUITE

- Finished master closet allowance
- Luxury master bath with 24" x 24" high gloss tile floors, quartz countertops
- Double undermount sinks in master suite
- Private water closet in master suite with Italian designer Mirabelle commodes in all bathrooms
- Full height shower with frameless enclosure
- New York soaker tub with free standing tub filler